

## STRATEGY DESCRIPTION

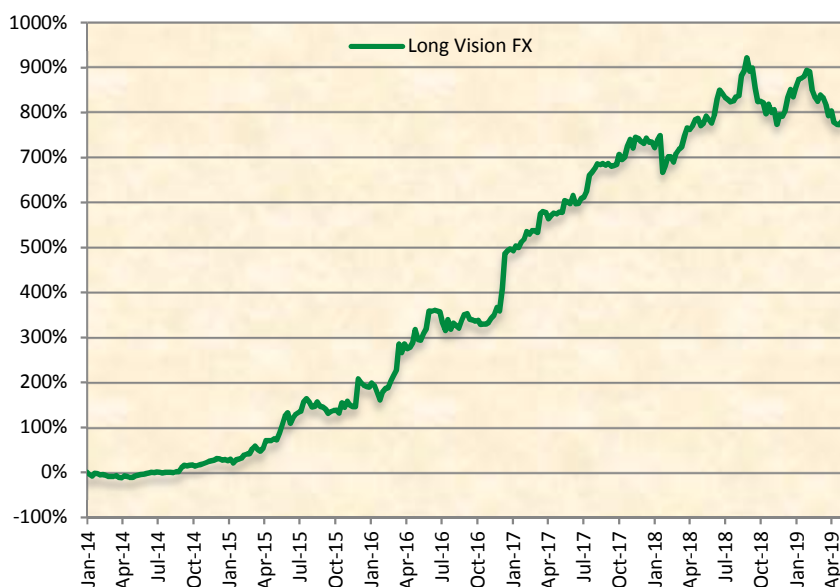
Long Vision FX is a portfolio based on a set of several strategies with different currencies that has the aim of capital growth in mid-to long-term. Using strict parameters and a wide diversification of currencies and trading style, Long Vision FX gets a good drawdown control without sacrificing profits.

Long Vision FX usually has a positive performance in markets with strong trends. In fact, the best results come in periods of high volatility. The broad diversity of strategies and currencies can also take advantage of ranging markets.

Other features:

- No exotic currencies trading
- No martingale strategies
- All trades have Stop Loss

## PERFORMANCE



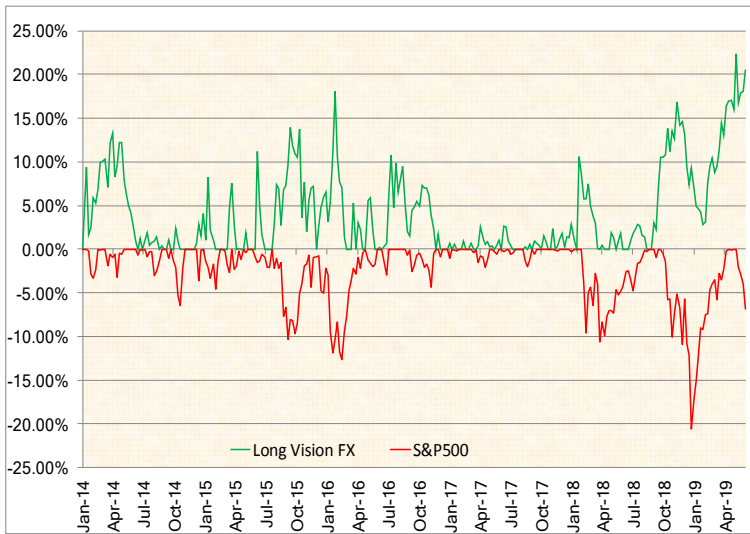
## PORTFOLIO INFORMATION

<b>Inception</b>	January 2014
<b>Broker</b>	Activtrades UK
<b>Regulation</b>	FCA
<b>Leverage</b>	Average 1:10 (Max used 1:20)
<b>Manager</b>	Feycox Development S.L.
<b>DD Max</b>	20%
<b>Market</b>	Forex
<b>Asset</b>	EURUSD,GBPUSD,USDJPY,AUDUSD,USDCHF, EURJPY,EURGBP,USDCAD,GBPCHF,GBPJPY, EURCAD,EURAUD,NZDUSD,AUDJPY,CADJPY
<b>Base Currency</b>	EUR

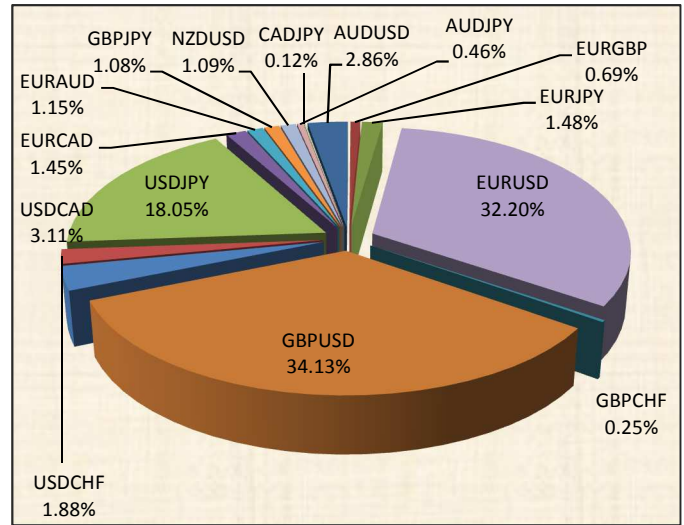
## MONTHLY PERFORMANCE

YEAR	JAN	FEB	MAR	APR	MAY	JUN	JUL	AUG	SEP	OCT	NOV	DEC	RETURN
2014	-2.41%	-6.78%	-2.93%	1.21%	7.43%	3.49%	1.27%	1.36%	16.65%	0.59%	6.89%	-1.15%	29.58%
2015	2.48%	9.43%	10.94%	10.05%	30.47%	3.31%	9.95%	-4.92%	-1.72%	2.48%	0.64%	17.59%	129.95%
2016	-9.73%	18.88%	23.81%	8.54%	1.05%	8.84%	-7.91%	5.17%	-1.95%	-1.28%	8.03%	26.47%	102.97%
2017	0.89%	5.28%	6.89%	-0.50%	3.65%	1.33%	9.65%	2.50%	-1.63%	5.40%	1.09%	-0.11%	39.64%
2018	-8.58%	5.46%	7.65%	2.69%	-1.27%	7.21%	-2.08%	10.84%	-8.71%	-2.34%	-2.11%	4.37%	11.53%
2019	6.59%	-7.28%	-2.99%	-1.84%	-1.23%								-7.05%

**DRAWDOWN**



**ASSET ALLOCATION**



**AVG. ASSET LENGTH**

Asset	Trades	Length (dd:hh:mm)
AUDUSD	815	01:06:53
EURGBP	231	00:07:10
EURJPY	503	02:18:33
EURUSD	12240	00:15:50
GBPCHF	100	00:05:57
GBPUSD	13110	00:14:37
USDCAD	918	03:05:53
USDCHF	487	00:05:26
USDJPY	6321	00:14:57
EURCAD	605	06:18:42
EURAUD	360	06:19:02
GBPJPY	550	03:17:07
NZDUSD	363	05:12:55
AUDJPY	125	02:09:36
CADJPY	75	06:19:43

**STATISTICS**

Performance Since Inception	769.62%
Monthly Performance	3.75%
Drawdown	18.07%
Best Month (%)	30.47%
Worst Month (%)	-9.73%
Profit Factor	1.14
Trades	36200
Won Trade (%)	64%
Average Win (pips)	27.95
Average Loss (pips)	-31.59
Average Monthly Trades	567
Average Trade Length (HH:mm)	0:09

**CUMULATIVE PERFORMANCE**

	YTD	1m	3m	6m	1Y	2Y
<b>Long Vision FX</b>	-7.06%	-1.23%	-5.95%	-2.99%	-1.47%	23.74%
<b>S&amp;P 500</b>	10.73%	-6.35%	-0.67%	0.74%	3.78%	18.71%