

STRATEGY DESCRIPTION

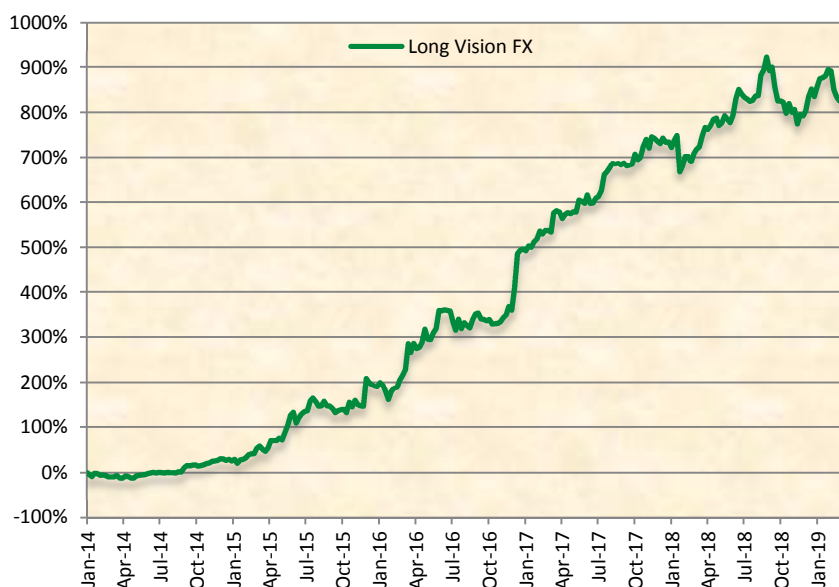
Long Vision FX is a portfolio based on a set of several strategies with different currencies that has the aim of capital growth in mid-to long-term. Using strict parameters and a wide diversification of currencies and trading style, Long Vision FX gets a good drawdown control without sacrificing profits.

Long Vision FX usually has a positive performance in markets with strong trends. In fact, the best results come in periods of high volatility. The broad diversity of strategies and currencies can also take advantage of ranging markets.

Other features:

- No exotic currencies trading
- No martingale strategies
- All trades have Stop Loss

PERFORMANCE



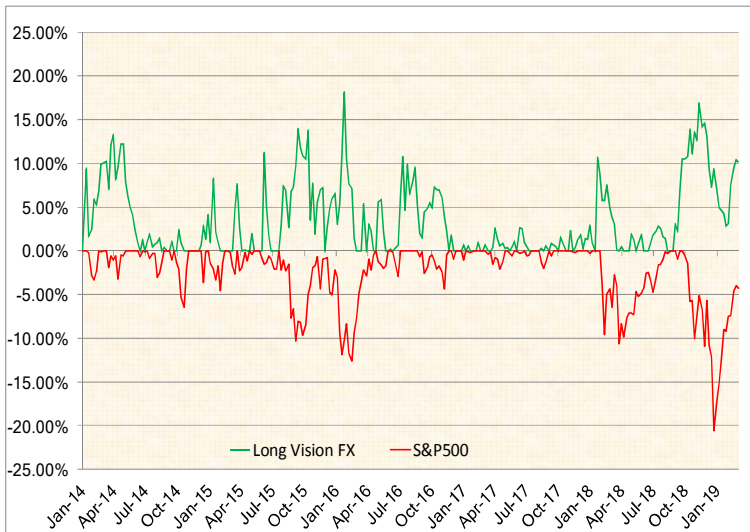
PORTFOLIO INFORMATION

| | |
|----------------------|--|
| Inception | January 2014 |
| Broker | Activtrades UK |
| Regulation | FCA |
| Leverage | Average 1:10 (Max used 1:20) |
| Manager | Feycox Development S.L. |
| DD Max | 20% |
| Market | Forex |
| Asset | EURUSD,GBPUSD,USDJPY,AUDUSD,USDCHF, EURJPY,EURGBP,USDCAD,GBPCHF,GBPJPY, EURCAD,EURAUD,NZDUSD,AUDJPY,CADJPY |
| Base Currency | EUR |

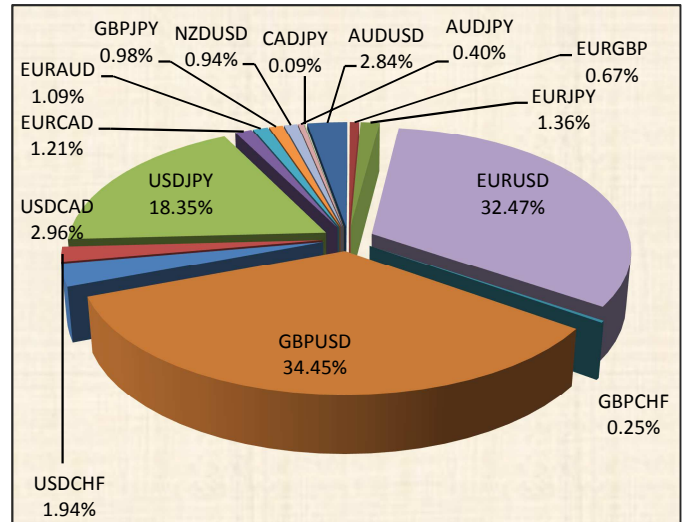
MONTHLY PERFORMANCE

| YEAR | JAN | FEB | MAR | APR | MAY | JUN | JUL | AUG | SEP | OCT | NOV | DEC | RETURN |
|------|--------|--------|--------|--------|--------|-------|--------|--------|--------|--------|--------|--------|---------|
| 2014 | -2.41% | -6.78% | -2.93% | 1.21% | 7.43% | 3.49% | 1.27% | 1.36% | 16.65% | 0.59% | 6.89% | -1.15% | 29.58% |
| 2015 | 2.48% | 9.43% | 10.94% | 10.05% | 30.47% | 3.31% | 9.95% | -4.92% | -1.72% | 2.48% | 0.64% | 17.59% | 129.95% |
| 2016 | -9.73% | 18.88% | 23.81% | 8.54% | 1.05% | 8.84% | -7.91% | 5.17% | -1.95% | -1.28% | 8.03% | 26.47 | 102.97% |
| 2017 | 0.89% | 5.28% | 6.89% | -0.50% | 3.65% | 1.33% | 9.65% | 2.50% | -1.63% | 5.40% | 1.09% | -0.11 | 39.64% |
| 2018 | -8.58% | 5.46% | 7.65% | 2.69% | -1.27% | 7.21% | -2.08% | 10.84% | -8.71% | -2.34% | -2.11% | 4.37% | 11.53% |
| 2019 | 6.59% | -7.28% | | | | | | | | | | | -1.18% |

DRAWDOWN



ASSET ALLOCATION



AVG. ASSET LENGTH

| Asset | Trades | Length (dd:hh:mm) |
|--------|--------|-------------------|
| AUDUSD | 784 | 00:19:59 |
| EURGBP | 219 | 00:07:14 |
| EURJPY | 444 | 02:16:30 |
| EURUSD | 11963 | 00:14:33 |
| GBPCHF | 100 | 00:05:57 |
| GBPUSD | 12543 | 00:13:36 |
| USDCAD | 838 | 02:19:24 |
| USDCHF | 487 | 00:05:26 |
| USDJPY | 6192 | 00:13:32 |
| EURCAD | 481 | 06:11:47 |
| EURAUD | 335 | 07:01:07 |
| GBPJPY | 480 | 03:12:58 |
| NZDUSD | 299 | 03:12:09 |
| AUDJPY | 107 | 01:21:02 |
| CADJPY | 55 | 05:10:49 |

STATISTICS

| | |
|------------------------------|---------|
| Performance Since Inception | 824.62% |
| Monthly Performance | 3.95% |
| Drawdown | 18.07% |
| Best Month (%) | 30.47% |
| Worst Month (%) | -9.73% |
| Profit Factor | 1.15 |
| Trades | 34743 |
| Won Trade (%) | 64% |
| Average Win (pips) | 27.67 |
| Average Loss (pips) | -31.04 |
| Average Monthly Trades | 570 |
| Average Trade Length (HH:mm) | 21:03 |

CUMULATIVE PERFORMANCE

| | YTD | 1m | 3m | 6m | 1Y | 2Y |
|-----------------------|--------|--------|-------|--------|--------|--------|
| Long Vision FX | -1.18% | -7.28% | 3.15% | -9.98% | 14.34% | 45.07% |
| S&P 500 | 11.48% | 3.21% | 1.42% | -3.04% | 4.68% | 22.58% |